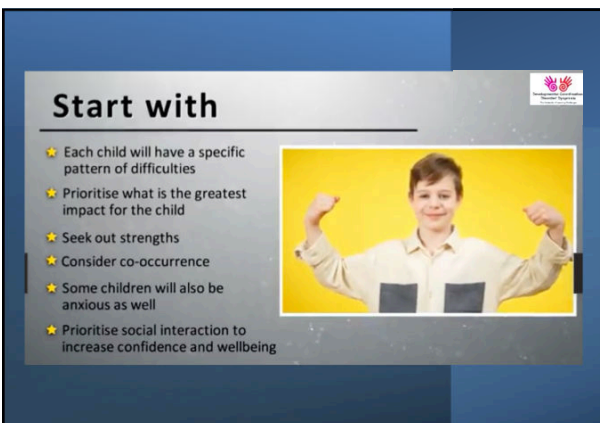
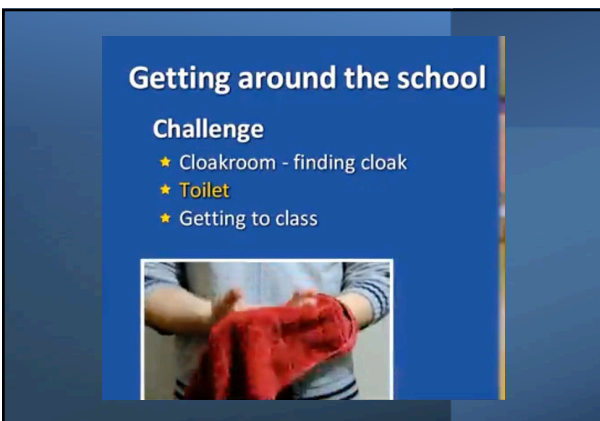


1



2



3

Getting around the school

Response


- ★ Hook on the end of the row
- ★ Buddy system around the school
- ★ Visit the school by parents
- ★ Video of school



4

Assembly Challenge


- ★ Sitting + listening posture and balance
- ★ Close contact with other children
- ★ Noise



5

Assembly Responses

- ★ Sit at end
- ★ Sit at low chair
- ★ Ear plugs?
- ★ Come in for last part of assembly




6

At play / break time

Challenge

- ★ Being on own
- ★ Can't / won't join in with play
- ★ Bullied



7

At play / break time

Response

- ★ Choice of games in the playground
- ★ Buddy system
- ★ Practice ball skills
- ★ Friendship bench or post

8

Lunch times

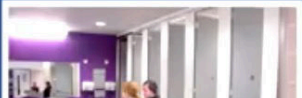
- ★ Encourage lunch time clubs where there are "formalised" opportunities for socialising
- ★ Get weekly menu from school so child knows what options are
- ★ Practise using cutlery
- ★ Check child is in stable position
- ★ Arrange who sits by the child



9

Toilets

- ★ Easy fasten clothes or add poppers and velcro
- ★ Wet wipes
- ★ Spare pair of pants



10

In class

Challenges


- ★ Recording from the board
- ★ Listening
- ★ Planning out tasks
- ★ Using tools - scissors / rulers
- ★ Posture
- ★ Position
- ★ Task
- ★ Motivation
- ★ Need to go to toilet

11

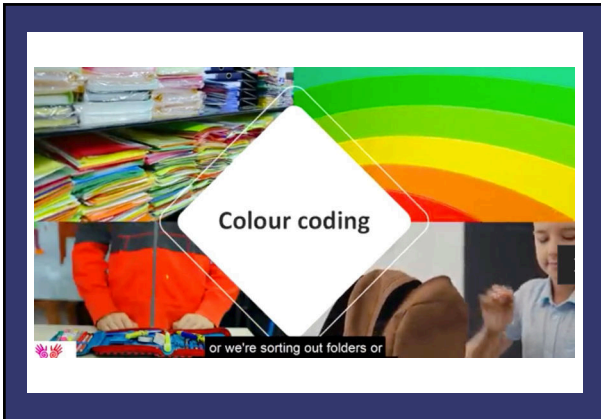
In class

Responses

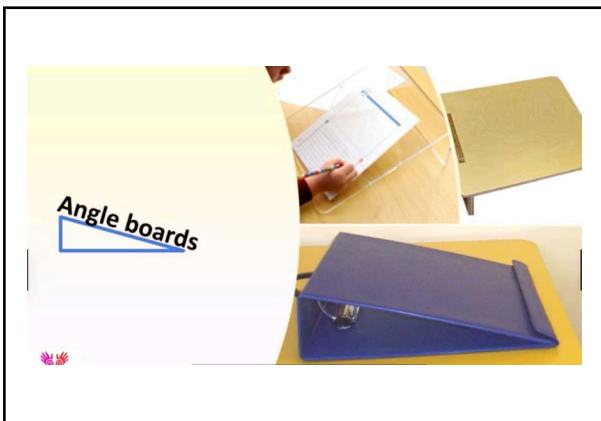
- ★ Facing the front
- ★ Angle board
- ★ Adapted tools / scissors
- ★ Minimise writing
- ★ Use alternative means of recording
- ★ Toilet 'pass'



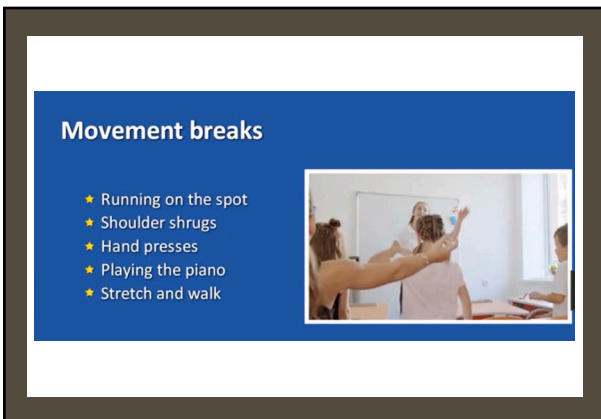
12



13



14



15

In PE / Games

Challenges

- ★ Understanding instructions
- ★ Following sequences of instructions
- ★ Carrying out movements
- ★ Working together in a group of different ability




16

In PE / Games

Responses

- ★ Break down tasks
- ★ Small group work
- ★ Stronger and weaker pairing
- ★ Model alongside student
- ★ Sufficient practise



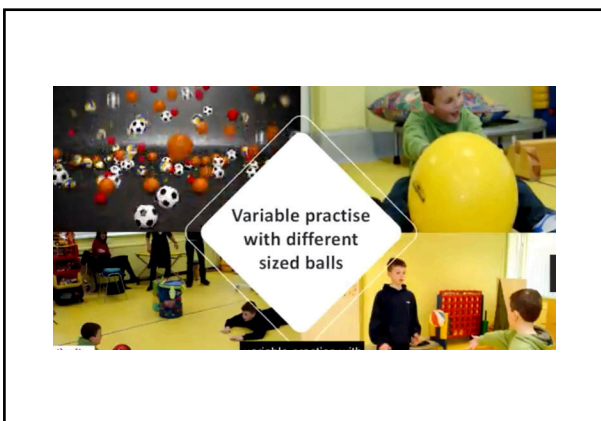
17



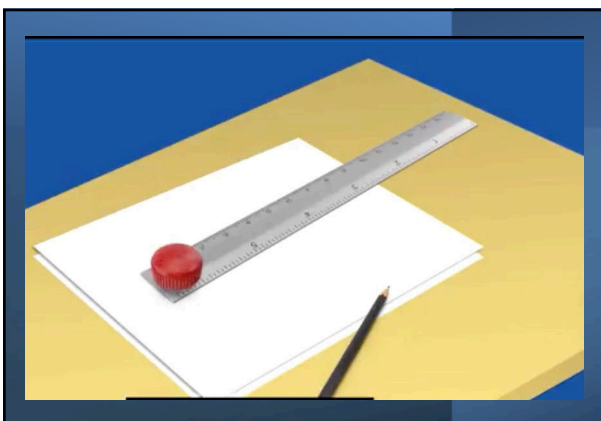
18

Action requirements					
Environmental demands		Neither body transport nor object manipulation	Object manipulation only	Body transport only	Both body transport and object manipulation
	Neither regulatory variability nor context variable	Maintaining standing balance	Writing on a blackboard	Walking on a pavement	Walking on a pavement while pulling along a bag on wheels
	Context variable only	Using sign language	Dealing a deck of cards	Playing hopscotch	Twirling baton while doing gymnastics
	Regulatory variable	Standing on a moving escalator	Standing in place when dribbling a ball	Walking on a moving escalator	Dribbling a ball while turning
	Both regulatory variability and context variability	Balancing on alternate feet on a moving escalator	Playing a computer game with a joystick	Running through a crowded airport	Dribbling a ball while running and defending

19



20




21

Working with parents before school

- 📦 Packing bag
- 📋 Remembering what to take
- 🕒 Leaving on time
- 🚌 Catching bus

- ★ Bag packed by front door
- ★ List in bag / kitchen, etc.
- ★ Practise new journeys
- ★ Playdates
- ★ Practise packing bags / opening packets
- ★ Using a timer to build up time awareness




22

Preparing for school

- ★ Labelled clothes
- ★ Logo on front as prompt
- ★ Right and left shoes
- ★ Preparing for periods
- ★ Elastic laces / Velcro
- ★ Adapted ware
- ★ Practising dressing skills in the holiday




23



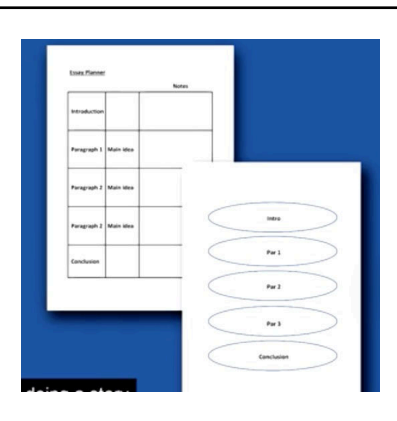
24

Homework at home

- ★ Same place
- ★ Same time
- ★ All equipment ready
- ★ Home - school diary
- ★ Create a plan
- ★ Use an essay planner
- ★ Parent buddy



25



Essay Planner		Notes
Introduction		
Paragraph 1	Main idea	
Paragraph 2	Main idea	
Paragraph 3	Main idea	
Conclusion		

- Intro
- Para 1
- Para 2
- Para 3
- Conclusion

26

27



28

29
