

2. Where to look for students who are Gifted with Learning Difficulties



Early Identification and Prevention

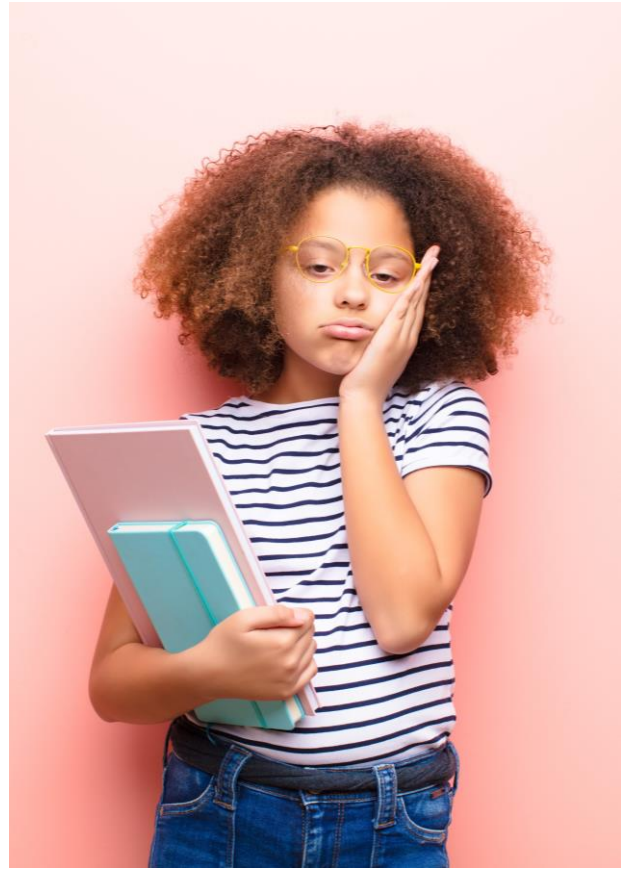
It is very important to know where to look for students who are Gifted/LD. The sooner you identify this child, the sooner you can prevent some of the trauma. A negative emotional response in students who are Gifted/LD is almost certain once school starts. This will result in depression, anxiety, withdrawal, aggression, or disruptive behaviour. Prevention is critical. The dissonance between the student's ability and his or her achievement in school, results in damage to self-esteem, which can be irreversible. Therefore, the combination of gifted with a learning difficulty must be understood and addressed by parents and teachers right from the beginning of school.

Each Student who is Gifted/LD is different from the others, but their similarity is that their potential does not match their achievement.

Parents take note: if your child is bright but he/she is not achieving in school, it is very important to ask the question **"WHY?"** as soon as possible.

Underachieving has been likened to a skin rash, since its description tells nothing of its cause (Tannenbaum, 1983).

The child who is Gifted/LD is seldom referred for psychological assessment because of a skill deficiency, but rather because of the psychological manifestations of distress (Senf, 1983). It is very important to be aware of other diagnostic criteria and not wait for "the psychological manifestations of distress" to appear.



References:

Corinne Bees, recently retired, was a special education teacher who designed and taught a program called the "GOLD" Program. The program, at Prince of Wales Secondary School in Vancouver, B.C., is for students who are Gifted with Learning Difficulties (Gifted/LD).

Adapted by Get into Neurodiversity for a global audience